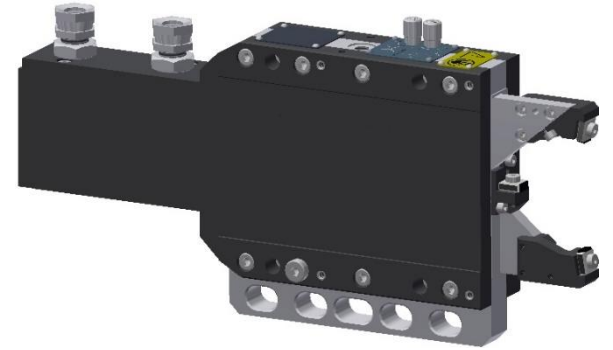


| Nest Set | | | 1 | 2 | 3 |
|------------------------|----|----|----|----|----|
| Minimum Clamp Diameter | D1 | mm | 15 | 30 | 45 |
| Maximum Clamp Diameter | D2 | mm | 30 | 45 | 60 |

| | | |
|--------------------------------------|-----------------|------------------------------------|
| X-Axis Adjustment per Screw Rotation | mm | 0.004 |
| X-Axis Adjustment Total | mm | ±0.20 |
| Y-Axis Adjustment per Screw Rotation | mm | 0.004 |
| Y-Axis Adjustment Total | mm | ±0.20 |
| Piston Area | cm ² | 6.4 |
| Cylinder Stroke | mm | 57.5 |
| Operating Pressure | bar | 15 – 30 |
| Maximum Pressure | bar | 45 |
| Air Purge Pressure | bar | 0.3 – 0.5 |
| Lubrication Volume | cm ³ | 0.04 – 0.06 |
| Lubrication Frequency | | Working Cycle (or every 6 minutes) |
| Repeatability | mm | ±0.001 |
| Mass | kg | 11 |
| Max Lifting Capacity | Kg | 43 |



- Included Features**
- * Arm Retraction for Part Loading
 - * Fixed or Follow Down Operation
 - * 2-Axis Centerline Adjustment
 - * 90° = 0.001mm Adjustment
 - * Visible Zero Adjustment Screws
 - * Position Feedback Sensors

- Items Required To Use This Product:**
- * Set of Nests
 - * Set of Wear Pads
 - * Mounting Base